


Western Learning Federation

Tŷ Gwyn School Prospectus



Together we **grow,**
learn and achieve.



A woman with long dark hair is leaning over a young child with blonde hair. They are both looking intently at a colorful, glowing light display on a table. The woman is wearing a patterned top, and the child is wearing a grey hoodie. The scene is lit with vibrant, multi-colored lights (red, orange, yellow, green, blue) that create a warm and engaging atmosphere. A large blue circular graphic is overlaid on the top right of the image, containing text.

“ My child has been exposed to a variety of **wonderful experiences** and the curriculum has clearly been **carefully tailored** and **suited to his needs.**”

PARENTS AND CARERS SURVEY - JULY 2024

Welcome from the Executive Headteacher



As Executive Headteacher of the Western Learning Federation, I'm delighted to welcome you to our prospectus which will provide you with information about our school, which is part of the Western Learning Federation.

The Western Learning Federation is unique as we are the only special school federation in Wales. The federation brings together three schools - all unique in their own right all working together with shared values and a determination to provide outstanding education to pupils with additional learning needs.

Whilst Riverbank, Tŷ Gwyn and Woodlands all have their own school visions and identities, there will be a direct link to those of the Western Learning Federation and as such, these school visions must and are considered a part of the vision of the Western Learning Federation.

The Western Learning Federation promotes all schools as 'Schools as Learning Organisations'. The foundations are built on a shared vision of 'learning together to grow and achieve'. The federation provides excellence in governance and creates an environment supporting continuous learning for all staff where collaboration is promoted in a nurturing and ambitious way. There is a culture and ethos of enquiry, innovation and exploration, with a focus on the collation and exchanging of learning knowledge.

Our organisation is committed to learning with and from the external environment as a person-centred learning organisation. The purpose of the Western Learning Federation and the role that schools play is clear; the organisations support a culture of self-reflection, continuous feedback and drive for growing learning leadership. The federation is underpinned by a set of values that define the culture of the three federated schools.

We operate with one governing body with a subcommittee structure that governs over all three schools. Whilst schools have their own identity, they are all operated through one Executive Headteacher and one governing body. This allows the schools to benefit from economies of scale, shared professional learning and shared pupil learning experiences.

The Western Learning Federation is about creating something that is unique and complements the excellent pedagogy that exists within each school setting. Our vision rightly inspires, but also complements and develops the outstanding innovation and practice currently in place at Riverbank, Tŷ Gwyn and Woodlands. Best wishes

Mr Wayne Murphy

Executive Headteacher
Western Learning Federation



Rachel Faulkner
Deputy Executive Headteacher,



Jamie Brotherton
Head of School,
Tŷ Gwyn

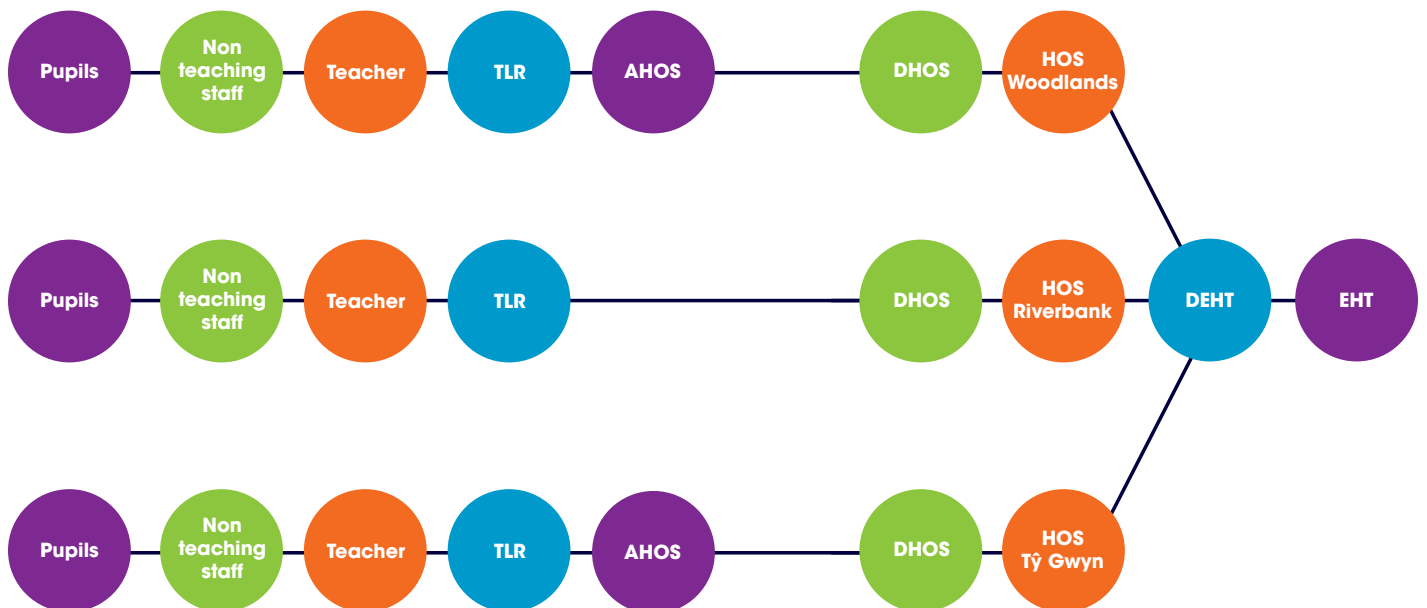
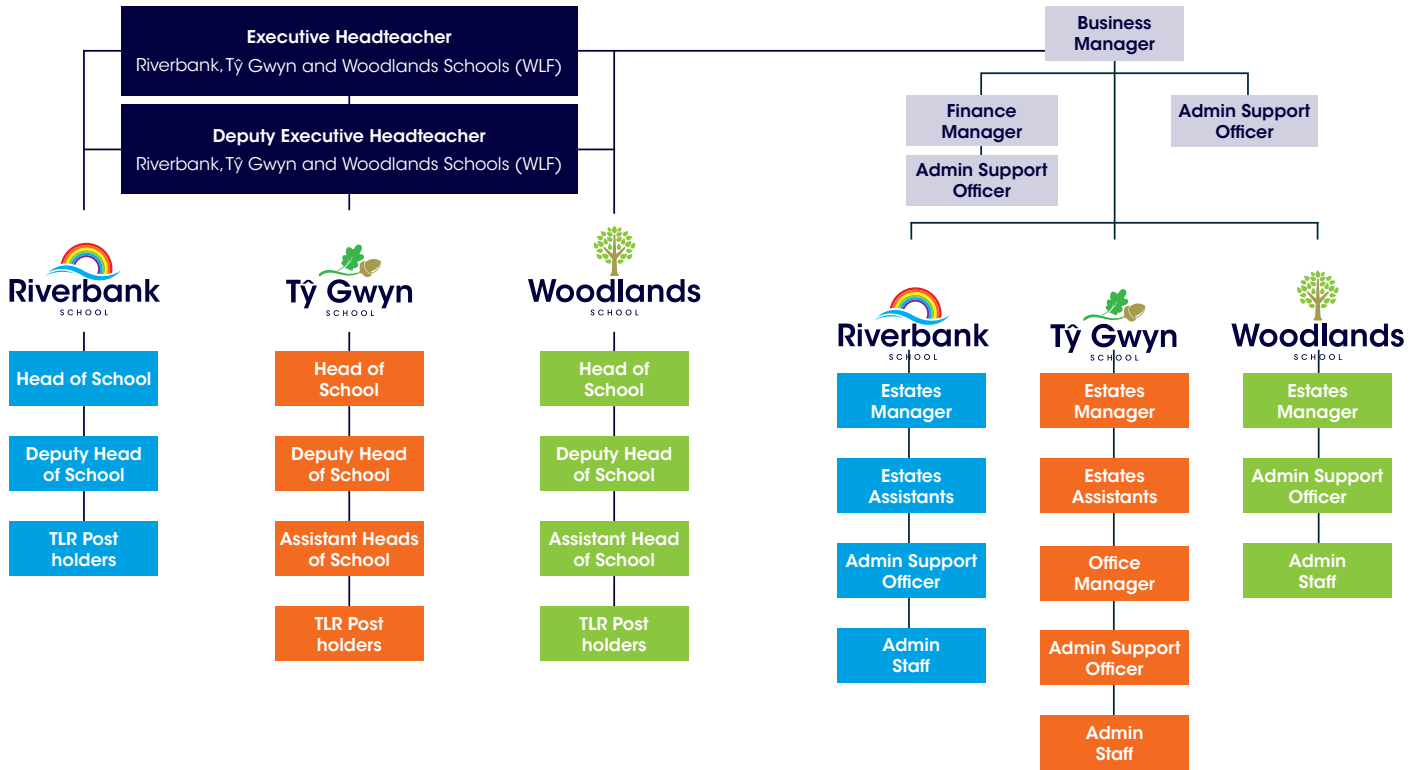


Tammy Lloyd
Deputy Head of School,
Tŷ Gwyn



Tess Combstock
Assistant Head of School,
Tŷ Gwyn

Organisation Structure





W An excellent community, welcoming and staff all clearly love what they do. I feel my child is happy and safe, enjoying a full range of opportunities"

PARENTS AND CARERS SURVEY - JULY 2024



The Values and Principles

Working together to grow, learn and achieve is our mission statement that we originated from Welsh Government vision for schools as learning organisations. We have embedded this mission statement into our vision, values and principles and it is the values that have shaped our strategic plan as we move through the decade since federating.

Our Mission Statement

Working together to grow, learn and achieve.

Our Values

- We celebrate our differences.
- We have a shared sense of belonging.
- We play, laugh, smile and celebrate success.
- We have a positive attitude.
- We learn from experiences to develop life and independent skills.
- We follow our dreams and aspirations.
- We care for our own and wider environment.
- We improve quality of life.

Definition

Values One's judgement of what is important in school life.

Principles Morally correct behaviour and attitudes.

Our Principles

Honesty

Responsibility

Positivity

Trust

Empathy

Patience

Respect

Kindness



Welcome to Tŷ Gwyn School



The information contained in this prospectus has been compiled to assist parents/carers in making an informed decision about sending their child to Tŷ Gwyn Special School.

Tŷ Gwyn is a local authority special day school located in the Ely area of Cardiff. We cater for children and young people aged 3 – 19 years who have complex, profound and multiple learning difficulties. Additionally, some of our pupils are on the autistic spectrum and present with severe challenging behaviour.

Our catchment area comprises of the City & County of Cardiff.

Visits, by prospective pupils and their parents/carers, are welcomed and will provide an opportunity for seeing the excellent facilities that the school has to offer including: classrooms with their own sensory room, outside area and changing facilities, a hydrotherapy pool, forest school, splash pool, softplay room, therapy room, gymnasium, rebound room, art room, sensory room and multiple playgrounds.

Staff at the school will be pleased to assist with any queries/questions relating to the content of this prospectus.



Jamie Brotherton
Head of School



Tammy Lloyd
Deputy Head of School



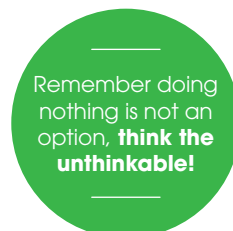
Tessa Combstock
Assistant Head of School



Wayne Murphy
Executive Headteacher
Wayne.murphy@cardiff.gov.uk



Rachel Faulkner
Deputy Executive Headteacher
FaulknerR15@Hwbcymru.net



In the event that you would like to disclose outside the organisation please contact the Education Safeguarding Team on **029 2233 0879**.



Welcome from the Head of School

It gives me great pleasure to present Tŷ Gwyn's prospectus to you. Within it you will be able to read about our aims and objectives, the school's ethos and values, and have a taste for the wonderful life of the school. We look forward greatly to welcoming your child, and you as parents or guardians, to Tŷ Gwyn school. We are committed to working closely with you throughout your child's time at the school to ensure their success and happiness.



Jamie Brotherton
Head of School

School Entry

Admission to Tŷ Gwyn is via the Local Authority (LA) (the Local Authority is the Admissions Authority). Children requiring a special school placement are placed on the Pupils Admission List. This list is considered by a multidisciplinary panel organised by the Local Authority to discuss the needs of each child and agree the most suitable placement.

If parents/carers decide that they wish their child to have a place at Tŷ Gwyn then an application must be made to the Local Authority, the Local Authority will consider the request and, if it is felt to be appropriate, will make the necessary arrangements for the child to be admitted (depending on availability of places).

The Local Authority advises parents/carers on visiting the special schools to enable an informed decision to be made in selecting a place for their child. Parents/carers who may be considering requesting a place for their child are welcome to make an appointment to visit Tŷ Gwyn, to take a tour of the school and to discuss what it has to offer to meet the needs of their child.

Vision Statement

"At Tŷ Gwyn School we believe that each pupil should have the opportunity to become ambitious capable learners within an enterprising, creative environment. Every pupil should be happy, supported and challenged to become ethical, informed citizens to achieve as much as possible. We believe every child has the right to reach their full potential as a healthy, confident individual in an education of high quality and where everyone is valued".



School Provision

The class - based staff are supported by our nursing, physiotherapy, occupational therapy, and speech & language therapy staff teams. We also benefit from input by the Local Authority sensory impairment team and advice from educational psychologists.

The building has first class information & communication technology, ICT, facilities. All classrooms have internet access and either interactive whiteboards or large plasma touchscreen units. A well-established Assistive Technology Centre is able to provide support for pupils, staff and parents to ensure that the best solutions are developed and implemented.

Tŷ Gwyn is an English medium school. Welsh is taught as part of the Curriculum for Wales. Incidental Welsh is also used throughout the school, on a daily basis, in order to promote the learning/understanding of the language.

The staff at Tŷ Gwyn promote a sense of cultural identity in school through a holistic approach by learning Welsh songs, poems and rhymes, organising visits from Welsh speaking theatre groups, musicians and other performers as well as teaching pupils about the culture and traditions of Wales as part of the curriculum. Certain documentation, subject matters, home and community links, extra-curricular activities, links with other schools and organisations also reflect the school's approach to promoting the Welsh identity.

Students are taught a wide and varied curriculum, enabling them to experience a range of skills, the emphasis being on life and Careers Work Related Experience skills.

Students are regularly taken out into the community where they apply the skills they learn to real life situations. The students gain accreditation and qualifications from their vocational studies.

Students have access to a wide range of exercise equipment, appropriate to their needs and abilities, and are encouraged to participate in a range of sporting activities. We are fortunate to have both an inside and out door gym.

There is fantastic multisensory provision on site enabling students to access sensory stories, music and sensory stimulation. All classrooms have internet access and large plasma touch screen units.

“As soon as we had a tour of the school, we saw how **friendly and warm** the atmosphere at this school was. **It stands out, and I've not found another school like it.**”

PARENT AND CARERS SURVEY - JULY 2024



The School Day

The pupils' school day begins at 9.15am and finishes at 3.15pm. The majority of our pupils stay for the whole day. Our nursery-aged pupils attend on a rolling programme consisting of 2 full days in week one followed by three full days in week 2. This pattern then continues for the year.

Lunchtime Arrangements

School dinners are prepared on the premises and are provided for pupils at the standard charge. We have a primary and a secondary sitting for lunch to ensure that all pupils have a calm environment in which to learn valuable skills associated with eating. We promote student developing independence and life skills as we consider this to be a valuable part of the curriculum.

School Council

The School Council was set up to ensure our pupils are fully involved in the schools aims and development. The School Council has an active role within the Healthy Schools and Eco-School's frameworks. The School Council helps generate ideas for upcoming Curriculum focus days and help choose which activities are selected. The School Council are heavily involved in the school's recruitment process and question candidates through pupil led interviews.

"Please treat me as you would wish to be treated yourself."





Multi-Disciplinary Support

All of the health professionals at Tŷ Gwyn work in close liaison with the school's education staff in order to provide a coordinated, multi-disciplinary service.

Nursing Team

There is a team of four qualified nurses within the school, who deal with all the health needs of our pupils. They ensure that any necessary nursing or medical interventions are undertaken with relevant pupils. This includes specialised feeding (e.g. Tube feeding), the giving of medication, suction etc. They also deal with accidents and emergencies e.g. Seizures, asthma attacks.

The nursing staff also co-ordinate medicals with community and consultant paediatricians, in addition to organising other clinics e.g. feeding.

If anyone is concerned about the general health needs of a pupil, he/she should approach the nurses with their concerns. The nurses will assess the need and undertake any relevant action.

If at any time during the day a member of education staff is concerned about the health of a pupil or are faced with a medical emergency a red button is positioned near the classroom door. When this is pressed a nurse can be at the classroom almost immediately.

Physiotherapy Team

Western Learning federation (Tŷ Gwyn, Riverbank and Woodlands) accesses the NHS Special School Physiotherapy team in Cardiff and Vale University Health Board (CAVUHB).

School based Physiotherapy provides specialist rehabilitation for children with neurodisabilities. This is provided within the physiotherapy department at Tŷ Gwyn School, in class with education staff, and at home with families. The team works to provide assessments and treatments that assist with physical, postural and developmental difficulties. The therapy interventions aim to optimise access to the school curriculum and participation in school life, which will often include teaching and training to educational staff and parents.

Many pupils will require the support of the physiotherapy team for the assessment and provision of specialist postural equipment, as part of the pupils 24 hour postural management programme. Some children may also require specific rehabilitation post-surgery, which will often be carried out in school and home environments.

The physiotherapy team work in partnership with the wider health MDT, paediatricians, orthopaedic consultants, orthotists and wheelchair services to provide joint clinic assessments at Tŷ Gwyn School. Our aim is to provide holistic care to young people and families in their community settings, enabling easier access to services and keeping young children well in their school environment.

Occupational Therapy

We currently have 4 Occupational Therapists based at Tŷ Gwyn on a part time basis. Occupational therapists work with people of all ages to help them overcome the effects of disability caused by physical or psychological illness, ageing or accidents. Currently, the main areas of therapeutic input offered by our OTs include:

- Seating assessments and reviews of seating equipment to promote postural management and skill development.
- Daily living equipment assessment to promote safety and development of skills with toilet equipment, feeding equipment and handling / lifting equipment.
- Developmental skill assessment in liaison with school staff for access to play and information technology.
- Sensory Integration strategies and techniques which are incorporated into class routines and form a vital part of the schools' approach to functional behaviour analysis.

They work closely with school staff and other health professionals based at Tŷ Gwyn, and other multi-disciplinary professionals and equipment suppliers.



Further details can be obtained by contacting the relevant department staff on:
(029) 20 838560

Speech and Language Therapy

Western Learning federation (Tŷ Gwyn, Riverbank and Woodlands) accesses the NHS Special School Speech and Language Therapy Team in Cardiff and Vale University Health Board (CAVUHB). Speech and Language Therapists (SLTs) can provide specialist knowledge in a wide range of speech, language, communication and feeding difficulties.

Where the pupil requires targeted or specialist support, the SLT Team works in collaboration with parents and family, school staff and multidisciplinary team members who are significant to the pupil. This integrated model of working ensures that we are setting goals that are meaningful to the pupil and have a positive impact on their daily interactions, activities and routines.

Many pupils' communication and feeding needs can be met by school and parents. The SLT Team works with the School's Senior Leadership Team to identify training needs around these areas and where appropriate provide universal training for the benefit of all pupils.

Sensory Support Team

The Sensory Team are based at Tŷ Gwyn for part of the week. They provide support and sessions to promote sensory skills for pupils with a Visual, Hearing or Multi-Sensory Impairment at Tŷ Gwyn. They also offer support and training to staff in the school.

The team consists of Teachers and Learning Support Assistants who have additional and mandatory specialist qualifications in sensory impairment. The team assesses pupils' level of sensory loss, in order to inform staff and contribute to Individual Development Plans.

Another part of their role is providing direct teaching, or modelling of interventions. We aim to encourage independence and support inclusion, providing engaging sessions, often using IT or activities / toys made and created specifically for individual pupils, based on their sensory needs. We work closely with staff and monitor the pupil's educational progress.

Children are often supported at home from the point of diagnosis, at Early Years settings and with transition into school.

Referrals are made by the Hospital or Schools.

The Sensory Team really welcome communication and liaison with the families of the fantastic pupils they work with!

How We Teach Children at Tŷ Gwyn

All pupils have individual learning programmes, where targets for improvement are set and reviewed annually. These pupil targets form the basis of performance management for teachers.

Individual planners break down termly targets into smaller more manageable steps, which are appropriate to the level of development of the individual.

We have an individualised multi-sensory approach to learning, enabling all of our pupils to access the curriculum appropriately. We believe in proactive, positive behaviour management and we celebrate the success of every pupil.

Pupil voice is extremely important to us. Individual development plans provide an opportunity for parents, professionals and pupils to engage together to forward plan based on individual wants and needs. Person Centred Targets are an integral part of the school ethos. Evidence and achievements are recorded and shared.

Right Respecting

As a Rights Respecting School we are committed to embedding the principles and values of the United Nation Conventions for the Rights of the Child (UNCRC).

This policy enables our pupils to access and enjoy the following articles of the convention:

Article 12: Every child has the right to be heard.

Article 28: Every child has the right to an education. We are a Right Respecting School.

Article 29: Education must develop every child's personality, talents and abilities to the full.

Article 42: Every child has the right to know their rights.



▼ Pupils **enjoy** coming to Tŷ Gwyn as a result of the **calm and nurturing environment** at the school. They feel **safe** in school and **build strong relationships** with staff, which helps them to **develop their social and independence skills** well over time.”

PARENTS AND CARERS SURVEY - JULY 2024



Family Centre

Our family Centre is open to all Monday to Friday. The primary reason for family centre is to offer support to children and their families/carers. It is a great opportunity for parents and students to become familiar with the school, meet the staff and ask any questions they may have in readiness for starting school. We have been assessed by Investors in Families (IIF) and been awarded Diamond status for our sustained commitment to support and working with families.

There is a parent room adjacent to the family centre where parents can have a coffee and wait for various appointments that they may have in school.

Parent involvement and support is seen as a valuable contribution in order to ensure a consistent approach to pupil learning. This is achieved by regular meetings with parents/carers, annual reviews, invites to special assemblies and celebrations, parent coffee mornings, parents' early years group and other events throughout the year.

Seesaw is completed daily by class teams, ensuring effective communication with parents. General school updates can be found on our Instagram, Facebook and X social media pages.

A copy of each child's current Individual Education Plan (IEP) is shared with parents; parental input is an essential element of the child's development at school. Home/school tasks are also encouraged to support children's learning.

The site is covered by CCTV cameras and security lighting. A meet and greet system is in operation.

All staff (including agency staff) are cleared by the DBS before they take up post. Volunteers are also required to undergo a check by the vetting and barring system before being allowed to give assistance.

All staff are aware of and abide by the content of the school's Health and Safety Policy. This policy is kept under review/updated by the Health and Safety Committee of the schools governing body. The policy incorporates advice/guidance received from the Local Authority and changes to relevant legislation and is scrutinised by the full governing body following any updates.

All offsite activities are subject to a rigorous risk assessment in order to ensure the health and well-being of staff and learners. A record is kept of all accidents and injuries that occur on site with the relevant returns being made to the Local Authority. Risk assessments are also carried out prior to certain lessons being undertaken when it is felt to be appropriate to the materials being used.

For more
information please
contact the Family
Centre on
20290 838560



The Curriculum at Tŷ Gwyn

We have incorporated statutory and non-statutory guidance and adopted a broad range of principles to ensure our curriculum is relevant to pupils' individual abilities and needs.

The structure, content and delivery of the curriculum offered at Tŷ Gwyn School is tailored to meet pupils' individual and holistic needs. We recognise that for our pupils to make optimum progress their learning must be placed within a relevant context.

Learning experiences across the school stimulate and challenge the full range of pupils within the school so that they engage fully in their learning and make the best possible progress.

All teachers and support staff effectively use their knowledge and understanding of each pupil's needs when planning the curriculum, as a result, all students are successfully motivated and challenged, removing significant barriers to learning.

The Curriculum for Wales makes it explicit that the curriculum and assessment arrangements in Wales will be fully inclusive

“**Easily understood** by all, encompassing an entitlement to **high-quality education for every child and young person and taking account of their views** in the context of the United Nations Convention on the Rights of the Child (UNCRC), and those of parents, carers and wider society.”

Successful Futures (2015)

We are fully committed to developing and implementing the four purposes of the curriculum as they apply within a special school context.

In summary we want all pupils at Ty Gwyn School to be;

- **Ambitious, capable learners;**
- **Enterprising, creative contributors;**
- **Ethical, informed citizens;**
- **Healthy, confident individuals.**



School Uniform



Please order your child school uniform here - www.safewearuk.com/school-uniform-childrenswear

Uniform can be delivered to school.

Safewear UK
Unit 1
Lewis Road
Cardiff
CF24 5EB

T: 0800 1975257
E: sales@safewearuk.com



Scan the QR Code to view our ESTYN results.



Social Media and Website

Each class has their own individual 'X' Page. You can access these pages by checking the class webpage or the main school 'X' page.



**Western
Learning
Federation**

Together we learn, grow and achieve



Tŷ GWYN SCHOOL

Mr Wayne Murphy - Executive Headteacher
Miss Rachel Faulkner - Deputy Executive Headteacher
Mr Jamie Brotherton - Head of School

Ffordd Vincent/Vincent Road, Trelái/Ely, Caerdydd/Cardiff, CF5 5AQ

T: 029 2083 8560

E: tygwynsp@cardiff.gov.uk

www.tygwynschool.com

WESTERN LEARNING FEDERATION

Mr Wayne Murphy - Executive Headteacher
Miss Rachel Faulkner - Deputy Executive Headteacher

Ffordd Vincent/Vincent Road, Trelái/Ely, Caerdydd/Cardiff, CF5 5AQ

E: westernlearningfederation@cardiff.gov.uk

www.westernlearningfederation.co.uk

